

Quaker basics for workers

Thursday, 1 May 2025



What's in the session today?

- What is a Quaker community?
- What are the spiritual underpinnings of this work?
- Where am I in the structure?
- What support is there for me?



www.quaker.org.uk/employers

What is a Quaker community?

What does it offer?

- Offering public meetings for Worship

What does the community need to make that happen?

- Pastoral care and spiritual nurture
- Witness, activism and outreach
- Community and fellowship for all ages
- Good support from role-holders and workers
- Well supported governance

www.quaker.org.uk/employers

What spiritually underpins this work?



Quaker faith & practice 13.33 says:

As Friends, we cannot separate our religious calling from our practical work for the kingdom of God. As Friends concerned for wardenship, we make our contributions in the local community to those who come to our meeting house. We appear to offer our facilities, but in fact we offer our love.

Quaker Home Service conference on wardenship, 1981

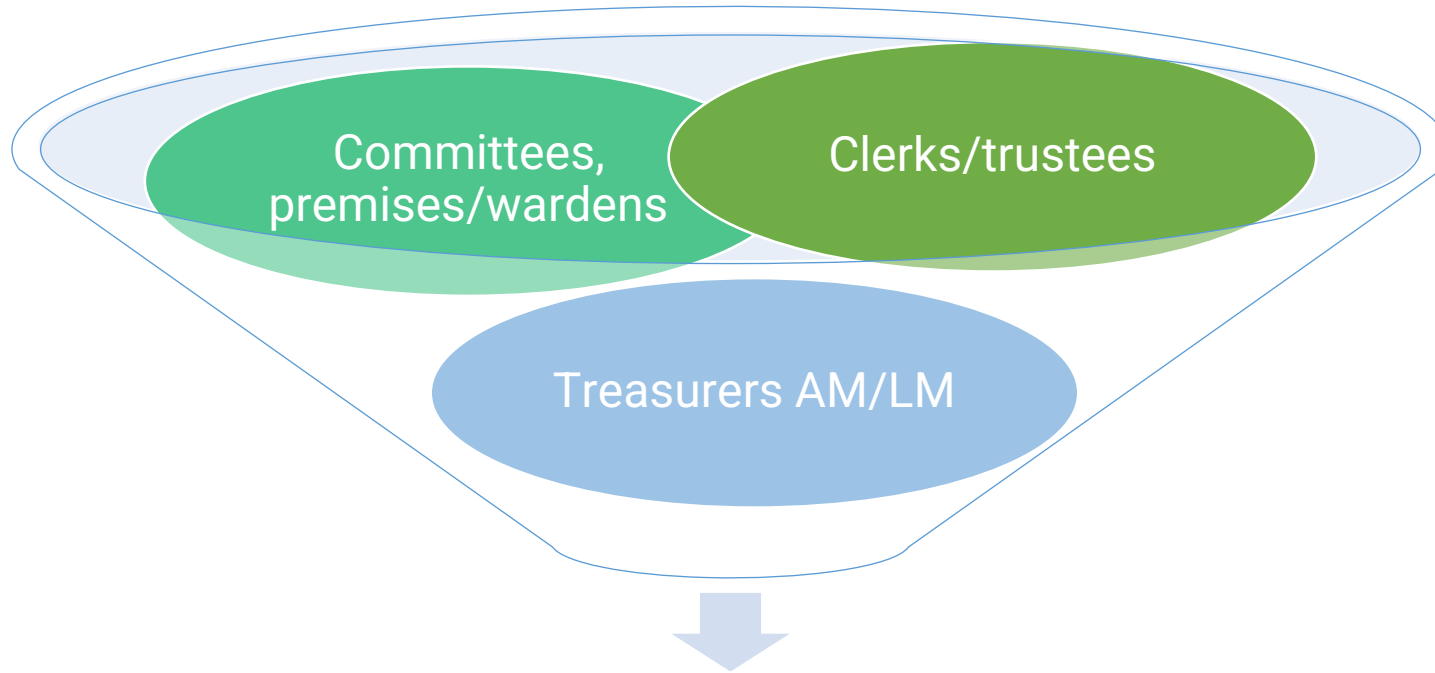
<https://qfp.quaker.org.uk/chapter/13/>

What does our Quaker structure look like?



www.quaker.org.uk/employers

Who else might we work with?



Local worker (warden, manager, RF, caretaker)

www.quaker.org.uk/employers